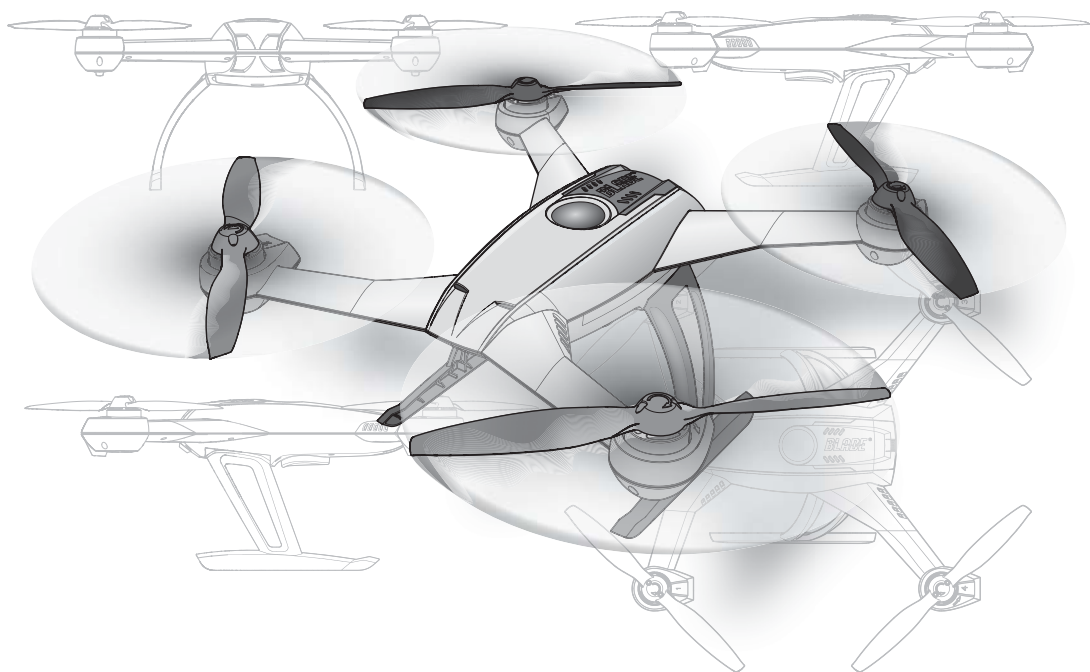


# **BLADE** 350 QX

#1 BY DESIGN



Quick-Start Guide  
Schnellanleitung  
Guide de démarrage rapide  
Guida rapida



**SAFE™**

**RTF**



## NOTICE

All instructions, warranties and other collateral documents are subject to change at the sole discretion of Horizon Hobby, Inc. For up-to-date product literature, visit [horizonhobby.com](http://horizonhobby.com) and click on the support tab for this product.

## Meaning of Special Language

The following terms are used throughout the product literature to indicate various levels of potential harm when operating this product:

**NOTICE:** Procedures, which if not properly followed, create a possibility of physical property damage AND a little or no possibility of injury.

**CAUTION:** Procedures, which if not properly followed, create the probability of physical property damage AND a possibility of serious injury.

**WARNING:** Procedures, which if not properly followed, create the probability of property damage, collateral damage, and serious injury OR create a high probability of superficial injury.



**WARNING:** Read the ENTIRE instruction manual to become familiar with the features of the product before operating. Failure to operate the product correctly can result in damage to the product, personal property and cause serious injury.

This is a sophisticated hobby product. It must be operated with caution and common sense and requires some basic mechanical ability. Failure to operate this Product in a safe and responsible manner could result in injury or damage to the product or other property. This product is not intended for use by children without direct adult supervision. Do not attempt disassembly, use with incompatible components or augment product in any way without the approval of Horizon Hobby, Inc. This manual contains instructions for safety, operation and maintenance. It is essential to read and follow all the instructions and warnings in the manual, prior to assembly, setup or use, in order to operate correctly and avoid damage or serious injury.

**Age Recommendation: Not for children under 14 years. This is not a toy.**

## General Safety Precautions and Warnings

- Always keep a safe distance in all directions around your model to avoid collisions or injury. This model is controlled by a radio signal subject to interference from many sources outside your control. Interference can cause momentary loss of control.
- Always operate your model in open spaces away from full-size vehicles, traffic and people.
- Always carefully follow the directions and warnings for this and any optional support equipment (chargers, rechargeable battery packs, etc.).
- Always keep all chemicals, small parts and anything electrical out of the reach of children.
- Always avoid water exposure to all equipment not specifically designed and protected for this purpose. Moisture causes damage to electronics.
- Never place any portion of the model in your mouth as it could cause serious injury or even death.
- Never operate your model with low transmitter batteries.
- Always keep aircraft in sight and under control.
- Always move the throttle fully down at rotor strike.
- Always use fully charged batteries.
- Always keep transmitter powered on while aircraft is powered.
- Always remove batteries before disassembly
- Always keep moving parts clean.
- Always keep parts dry.
- Always let parts cool after use before touching.
- Always remove batteries after use.
- Never operate aircraft with damaged wiring.
- Never touch moving parts.



**CAUTION:** The ESCs for the 350 QX are not compatible with any other product, and the 350 QX is not compatible with any other ESCs. Use of any other ESCs on the 350 QX will cause a crash which may result in property damage and or personal injury.



**WARNING:** This quick-start guide is only intended to cover the basic operation of the 350 QX. For a complete description of the function, capabilities, and maintenance of the *Blade* 350 QX please see the full manual online at [www.horizonhobby.com](http://www.horizonhobby.com).

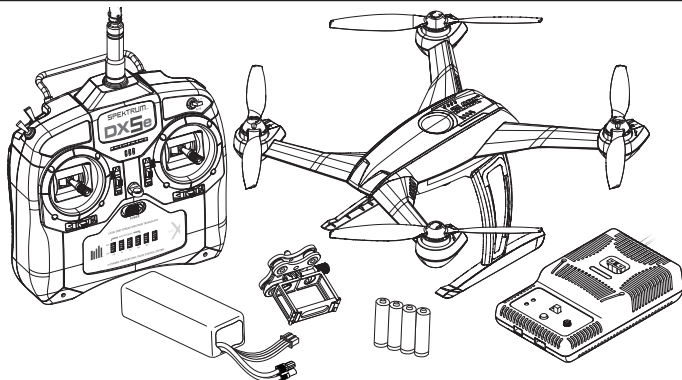


**WARNING AGAINST COUNTERFEIT PRODUCTS:** If you ever need to replace your Spektrum receiver found in a Horizon Hobby product, always purchase from Horizon Hobby, Inc. or a Horizon Hobby authorized dealer to ensure authentic high-quality Spektrum product. Horizon Hobby, Inc. disclaims all support and warranty with regards, but not limited to, compatibility and performance of counterfeit products or products claiming compatibility with DSM or Spektrum.

# BLADE 350 QX

## Box Contents

- Blade 350 QX
- Camera mount
- 3S 11.1V 2200mAh Li-Po Battery Pack
- 2-3S DC Li-Po Balancing Charger
- DX5e DSMX 5-Channel Transmitter (RTF only)
- 4 AA Batteries (RTF only)



## Charging the Flight Battery

### E-flite® 2-3S LiPo Balancing Charger Specifications

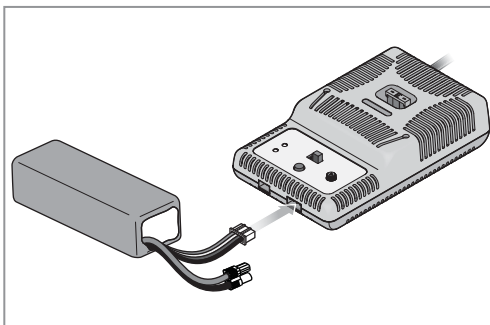
- Input power: 10.5–15.0V DC, 3-amp
- Charges 2- to 3-cell Li-Po packs with minimum capacity of 500mAh

### E-flite 3S 11.1V 2200mAh Li-Po Battery Pack

The E-flite® 3S Li-Po battery pack features a balancing lead that allows you to safely charge your battery pack when used with the included E-flite Li-Po balancing charger.



**CAUTION:** The balance connector must be inserted into the correct port of your charger prior to charging.



**CAUTION:** Overcharging a battery can cause a fire.



**CAUTION:** Only use a charger specifically designed to charge a Li-Po battery. Failure to do so could result in fire causing injury or property damage.



**CAUTION:** Never exceed the recommended charge rate.

**NOTICE:** If using a battery other than the included Li-Po battery, refer to your battery manufacturer's instructions for charging.

### The Battery Charging Process

1. Charge only batteries that are cool to the touch and are not damaged. Look at the battery to make sure it is not damaged e.g., swollen, bent, broken or punctured.
2. Attach the input cord of the charger to the appropriate power supply (12V accessory outlet).
3. When the Li-Po charger has been correctly powered up, there will be an approximate 3-second delay, then an audible “beep” and the green (ready) LED will flash.
4. Turn the control on the Amps selector so the arrow points to the charging rate required for the battery (the 2200mAh Li-Po battery will charge at 2.0 amps). DO NOT change the charge rate once the battery begins charging.
5. Move the cell selector switch to 3-cell for your battery.
6. Connect the balancing lead of the battery to the 3-cell (4 pin) charger port and press the Start button to begin battery charging.
7. The green and red LEDs may flash during the charging process when the charger is balancing cells. Balancing prolongs the life of the battery.
8. When the battery is fully charged, a beep will sound for about 3 seconds and the green LED will shine continuously. Attempting to charge an over-discharged battery will cause the charger to repeatedly flash and beep, indicating an error has occurred.
9. Always unplug the battery from the charger immediately upon completion of charging.

## Transmitter Setup (BNF)

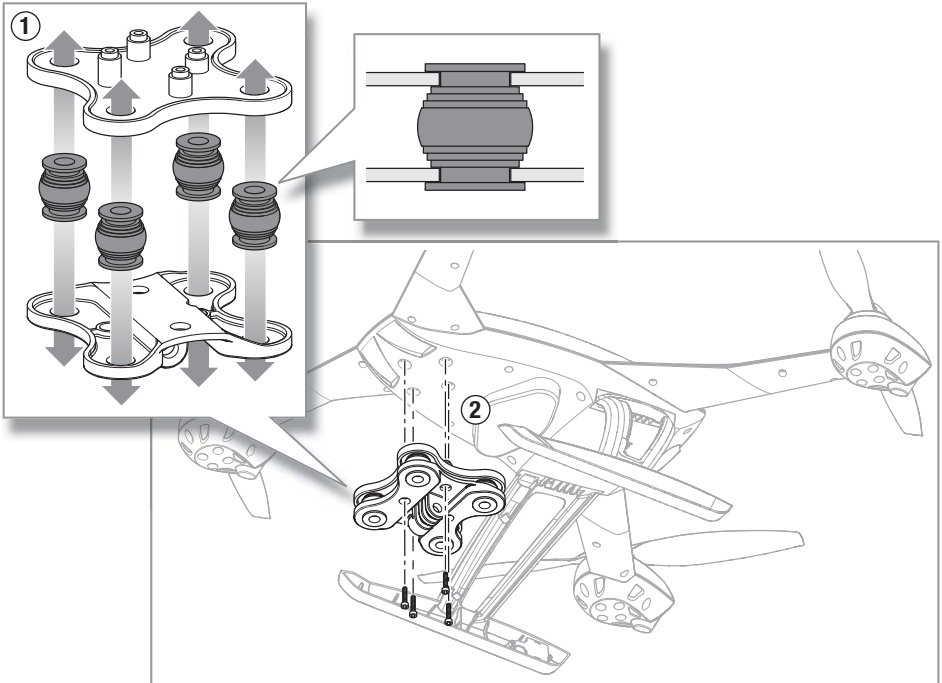
Transmitter	Model Type	Reverse Setup	Throttle Cut Setup	Mode Setup	Switch Positions	Throttle Cut	Return Home	Dual Rate Switch	High Rate	Low Rate
DX4e (New)* w/3-position switch	N/A	N/A	N/A	N/A	Position 0 = <b>SMART Mode</b>	Lower throttle trim until motors stop turning	Press and Hold TRAINER/BIND Release to EXIT	Rate	100% fixed	70% fixed
					Position 1 = <b>Stability Mode</b>					
					Position 2 = <b>Agility Mode</b>					
DX5e (New)* w/3-position switch	N/A	N/A	N/A	N/A	Position 0 = <b>SMART Mode</b>	Lower throttle trim until motors stop turning	Press and Hold TRAINER/BIND Release to EXIT	Rate	100% fixed	70% fixed
					Position 1 = <b>Stability Mode</b>					
					Position 2 = <b>Agility Mode</b>					
DX6i	Acro	THRO-N ELEV-N GEAR-R AILE-N RUDD-N FLAP-N	ACT	Travel Adj: Gear (0) ↑ 100%; F MODE (1) ↓ 40% FLAPS: Norm ← ↑ 100; LAND ↓ 100 MIX 1: ACT; Gear → Gear ACT RATE D 0%; U + 100% SW MIX TRIM INH	GEAR 0; Mix 0 = <b>SMART Mode</b>	Press throttle cut	FLAP Position 0 = OFF FLAP Position 1 = Return Home	ELEV-AIL D/R	100%	70%
					GEAR 1; Mix 0 = <b>Stability Mode</b>					
					GEAR 1; Mix 1 = <b>Agility Mode</b>					
DX7/7SE	Acro	FLAP-R (6) Others-N	N/A	Travel Adj: Gear (0) ↑ 100%; GEAR (1) ↓ 40% MIX 1: FLAP → Gear OFF/ON RATE → -50% 0% SW: MIX OFFSET: 0	GEAR (0); Mix (0) = <b>SMART Mode</b>	Lower throttle trim until motors stop turning	FLAP Pos 0 = OFF FLAP Pos 1 = Return Home	ELEV-AIL D/R	100%	70%
					GEAR (1); Mix (0) = <b>Stability Mode</b>					
					GEAR (1); Mix (1) = <b>Agility Mode</b>					



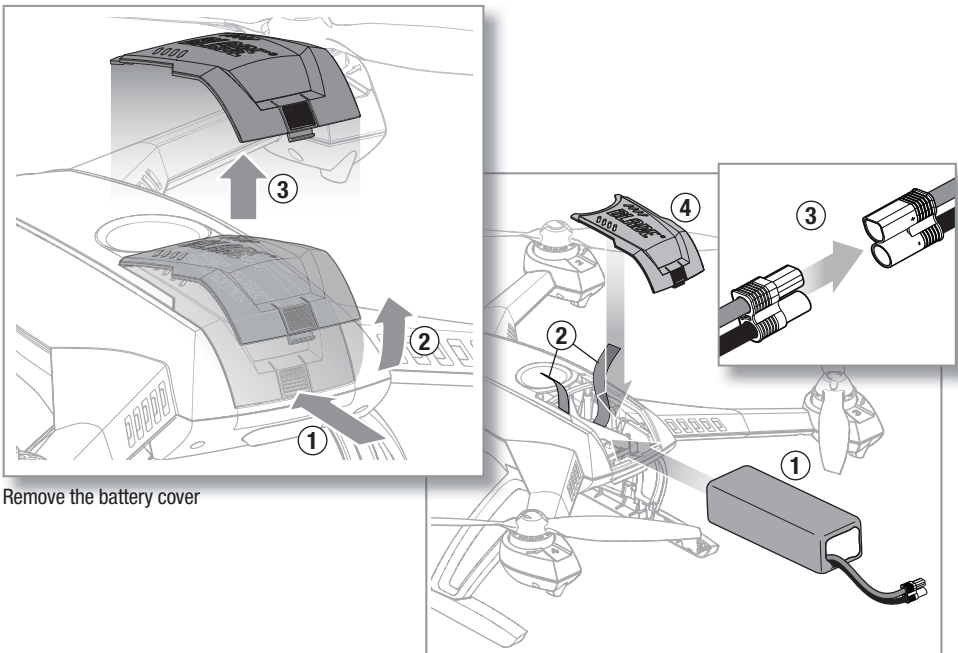
Transmitter	Model Type	Reverse Setup	Throttle Cut Setup	Mode Setup	Switch Positions			Throttle Cut	Return Home	Dual Rate Switch	High Rate	Low Rate
DX7S	Acro	AUX1-R Others-N	Set To: Trainer	Channel Assign: Move Gear to F MODE (F MODE:GEAR) Leave FLAPS as AUX1 Set All Others to INH MIX 1: GER > GER RATE: 0% -100% OFFSET: 0%; TRIM: INH; SW: Mix0	F MODE (0) = <b>SMART Mode</b>	Press Trainer	FLAP Pos 0 = OFF FLAP Pos 2 = Return Home			ELEV-AIL D/R	100%	70%
					F MODE (1) = <b>Stability Mode</b>							
					F MODE (1): HOLD (1) = <b>Agility Mode</b>							
DX8	Acro	AUX1-R Others-N	Set To: Trainer	Switch Select: F-Mode to Gear; Flap to Aux 1 All Others to INH	F MODE (0) = <b>SMART Mode</b>	Press Trainer/ Bind	FLAP Pos 0 = OFF FLAP Pos 2 = Return Home			ELEV-AIL D/R	100%	70%
					F MODE (1) = <b>Stability Mode</b>							
					F MODE (2) = <b>Agility Mode</b>							
DX18	Acro	AUX1-R Others-N	Set To: I (BIND)	Channel Assign: NEXT 1-4: N/A 5 Gear: B 6 AUX1: D 7 AUX2: I 8-10: INH	B (0) = <b>SMART Mode</b>	Press (BIND)	D (FLAP) Pos 0 = OFF D (FLAP) Pos 2 = Return Home			ELEV-AIL D/R	100%	70%
					B (1) = <b>Stability Mode</b>							
					B (2) = <b>Agility Mode</b>							

\* Old versions of the DX4e and DX5e (with 2 Position Channel 5 Switches) are **not** recommended for the 350 QX. Only **Smart Mode** and **Agility Mode** will be available with GPS On.

# Assembling and Installing the Camera Isolation Mount



## Connecting the Flight Battery



Remove the battery cover

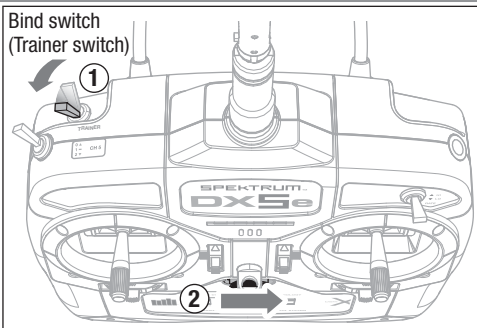
Install the battery

## Binding

If you purchased the ready-to-fly (RTF) model, the transmitter is bound to the model at the factory. If for any reason the model needs to be re-bound, follow the Bind-N-Fly® (BNF) directions below.

**BNF**  
BIND-N-FLY®

To bind or re-bind your 350 QX to your chosen DSM2/DSMX transmitter, please follow the directions below along with the binding instructions included with your transmitter:



Normal Bind

### The Binding Process

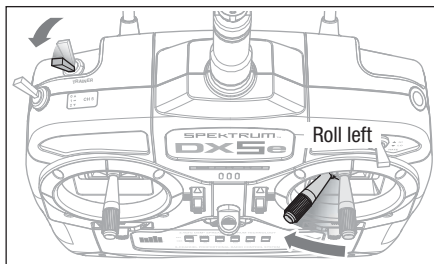
1. With the transmitter powered off, connect the battery to the 350 QX.
2. With the 350 QX on a level surface, turn on the power switch and allow the quadcopter to initialize.
3. Wait until the blue LED on the quad flashes rapidly, signaling the quadcopter is initialized and ready to bind.
4. Turn on the transmitter in bind mode.

**NOTICE:** Always bind with the throttle trim at neutral.

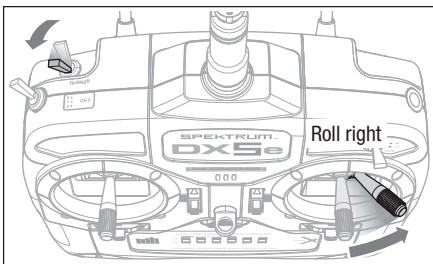
Refer to the LED Codes table to ensure the aircraft is bound correctly.

If the 350 QX fails to bind, turn off the power to the quad and the transmitter and repeat steps 2-4 above.

### Mode 2 shown



Bind with GPS enabled



Bind with GPS disabled

When the 350 QX is bound it needs to see neutral elevator and aileron inputs. If the aircraft receives any input other than neutral, it will emit a constant rapid beeping sound.

Please follow this procedure if your 350 QX emits a constant beeping sound after binding:

1. Ensure all trims are neutral
2. Slowly move the elevator stick back and forth close to center and listen for the beeping to stop or hesitate, take note of the direction you are moving the stick when the change of tone happens
3. If the tone never changes with elevator movement, slowly move the aileron stick back and forth close to center and listen for the beeping to stop or hesitate, take note of the direction you are moving the stick when the change of tone happens
4. Input trim in the direction that caused the change in tone until the beeping stops

In the event you cannot find an input that stops the tones:

1. Apply 1 click of elevator trim and then slowly move the aileron stick close to center.
2. Continue to add 1 click at a time of elevator trim, up to 5 trim steps off center, and move the aileron stick until you find the point that makes the tones stop.
3. Add aileron trim in the direction you moved the stick to make the tones stop.

# Flight Mode Switches

## GPS Enabled Functions



**Return Home**  
(Rapid Red flashing LED on the 350 QX)



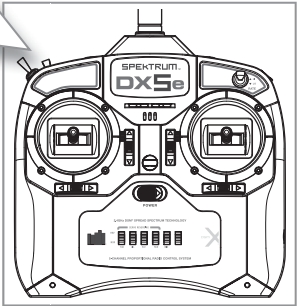
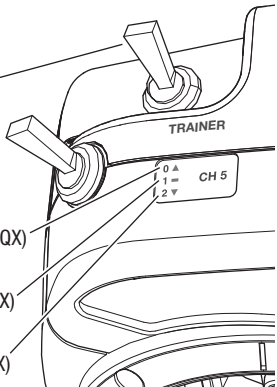
**Smart Mode**  
(Solid Green LED on the 350 QX)



**Stability Mode**  
(Solid Blue LED on the 350 QX)



**Agility Mode**  
(Solid Red LED on the 350 QX)



## Flight Modes Explained



Flight Mode 0- **Smart Mode (Default)**  
(solid green LED indicator)

- **Stick Relativity**- With a solid GPS lock there is no orientation for the pilot to deal with (in **Smart Mode** only). The path of the aircraft will always follow the control stick input relative to the SAFE circle, regardless of the direction the nose of the aircraft is pointing.
- **SAFE Circle™** - In most scenarios, the quad will not enter the SAFE circle.
- **Position Hold**- The aircraft will hold its position when elevator and aileron inputs are at neutral.
- **Self leveling**- Brings the 350 QX to a level attitude when the elevator and aileron inputs are at neutral.
- **Altitude Hold**- Altitude is relative to throttle stick position.

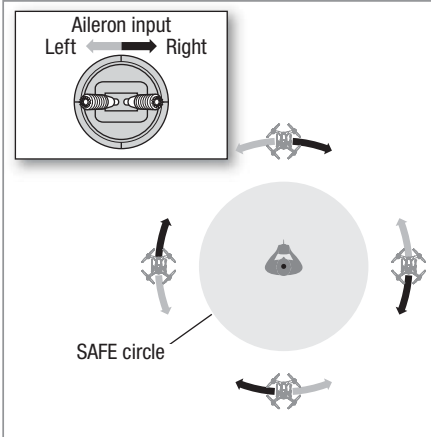
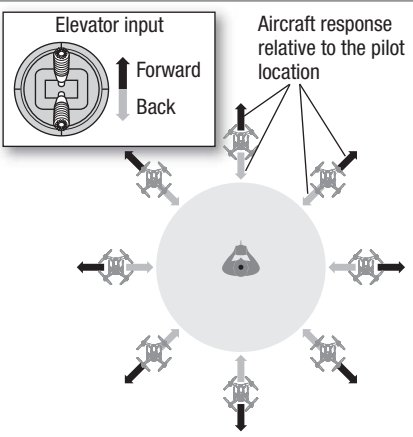


Flight Mode 1- **Stability Mode**  
(Solid Blue Indicator LED)



Flight Mode 2- **Agility Mode**  
(Solid Red Indicator LED)

## Stick Relativity

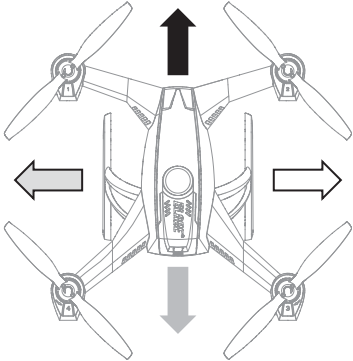
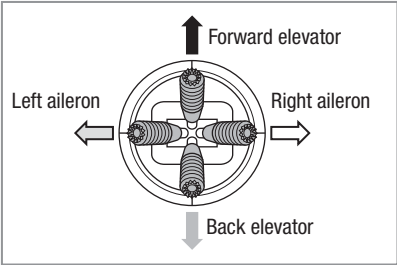


The Blade 350 QX flies very differently in the different flight modes. Beginners should use **Smart Mode** to begin with, and progress slowly into **Stability Mode**. When flying in **Smart Mode**, the quadcopter follows stick input based on the set pilot location. When flying in **Stability Mode**, the quadcopter follows stick inputs based on the orientation of the aircraft. The transition from **Smart Mode** to **Stability Mode** can be a challenge for new flyers because the pilot will need to learn how to interpret the aircraft's orientation.

This aircraft is extremely sensitive to control inputs in **Agility Mode** and has NO self leveling. We recommend you fly at low rate settings for the first few flights until you are familiar with its response. For pilots new to quadcopters and helicopters, familiarize yourself with your Blade 350 QX in **Smart Mode** and at low rate.

As you become more familiar with the quadcopter's response, for flyers using a computer radio, adjust the rates and expo to suit your flying style.

**Stability and Agility Mode Control Inputs**

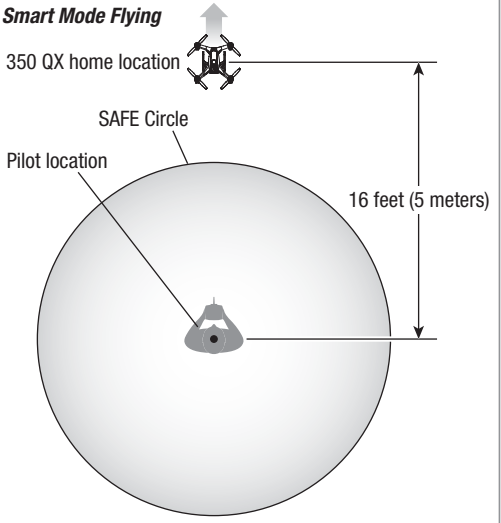


**CAUTION:** Please do not attempt to fly your 350 QX in **Stability Mode** or **Agility Mode** until you have familiarized yourself with the operation of the aircraft in **Smart Mode** and read and understand the descriptions of the other flight modes. For a full description of **Stability Mode** and **Agility Mode**, please see the full *Blade 350 QX* manual at [www.bladehelis.com/Support/Manuals](http://www.bladehelis.com/Support/Manuals).

**Preparing the 350 QX For Flight**

1. Power on the transmitter with the flight mode set to **Smart Mode**, the throttle stick down and the throttle trim at neutral.
2. Install a charged battery, plug it in and close the hatch.
3. With the quad on a level surface, turn on the power switch and allow the 350 QX to initialize. If the GPS is enabled, wait for the GPS signal to be acquired, which is indicated by a solid green LED. It may take from 30–90 seconds to acquire a GPS signal.
4. Move the aircraft to the desired home location and orient the aircraft pointed away from the pilot.
5. Step back approximately 16 feet (5 meters) from the home location.
6. When you are prepared to fly, quickly move the rudder stick all the way left and then all the way right. At this point the props will begin to spin, the home position for GPS functions is set and your aircraft is ready to fly.

**Smart Mode Flying**



**NOTICE:** Lower the throttle stick and the throttle trim to power off the props after flight.



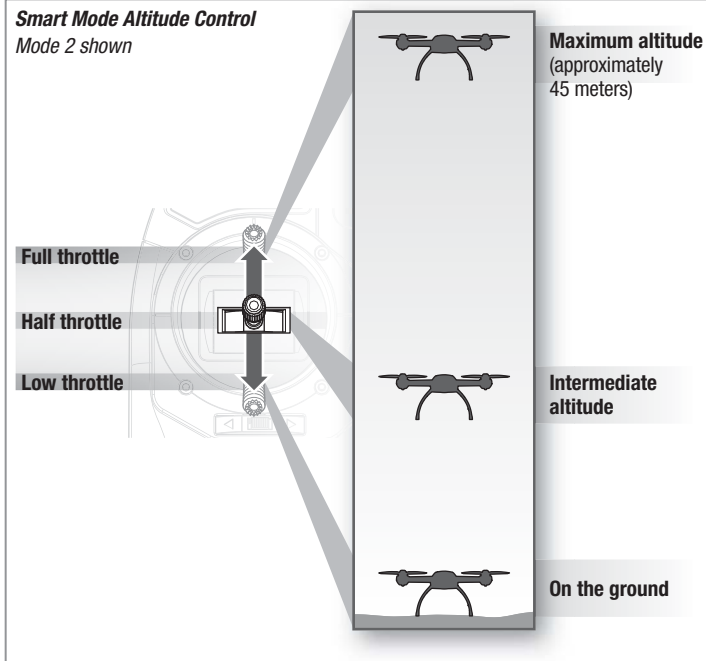
**CAUTION:** When the home location is set (**step 6**), the 350 QX must be approximately 16 feet (5 meters) from where the pilot will stand during flight and pointed away from the pilot. If the aircraft is pointed in any other direction the **SAFE Circle** will not function as expected and may result in personal injury or damage to property. Once the aircraft is armed, do not change your position.

## Flying the 350 QX

### Takeoff

Increase the throttle slightly above low stick. The 350 QX altitude in **Smart Mode** corresponds with throttle position. Low throttle is on the ground, slightly raising the throttle will produce a low hover, and the higher the throttle position, the higher the 350 QX will ascend until it reaches its maximum altitude (approximately 45 meters).

Explore the flight envelope of the 350 QX in **Smart Mode** without fear of losing orientation. See the diagrams on the previous page for more detail on the aircraft's function in **Smart Mode**. In **Smart Mode** the direction the aircraft is pointing does not affect the control, and the aircraft's response relative to you (*the pilot location*) does not change with orientation. **Stability Mode** and **Agility Mode** operate more like a conventional RC helicopter or multicopter.



**NOTICE:** Aggressive flight in **Agility Mode** will significantly reduce flight time.

For more information on **Stability** and **Agility Modes**, please see the full manual online at [www.bladehelis.com/Support/Manuals](http://www.bladehelis.com/Support/Manuals).

### Landing

To land the 350 QX there are two options.

- Guide the aircraft to where you wish to land and reduce the throttle. Reduce the throttle trim after landing to disarm the motors.
- Activate the Return Home function and the 350 QX will return to the assigned home location and land automatically.



**CAUTION:** Do not activate the **Return Home** function if the 350 QX is showing the low battery indication. Land the aircraft immediately.



## Return Home

- When this feature is activated, the 350 QX will fly back to its assigned home location and land. After landing the motors will disarm.
- To restart the props after landing in **Return Home** fully lower the throttle and ensure throttle trim is neutral, quickly move the rudder stick fully left and then fully right.



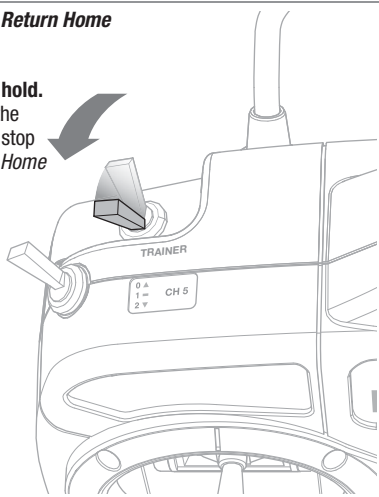
**WARNING:** The 350 QX will not recognize the SAFE Circle when **Return Home** is used. Activating **Return Home** may cause the 350 QX to fly directly over the pilot if the aircraft was flown to a position behind where the pilot was standing when the home position was established.

### After Your Flight

1. Turn off the power switch on the 350 QX.
2. Turn off the power to your transmitter.
3. Unplug and remove the battery from the 350 QX.

## Activating Return Home

**Press and hold.**  
Releasing the switch will stop the *Return Home* program.



## Operating the 350 QX With GPS

To acquire a reliable GPS signal, it is important the 350 QX has a clear view of the sky. Obstructions which can affect the aircraft's ability to acquire an acceptable signal include:

- Flying close to or around tall/big buildings
- Flying under dense vegetation
- Flying indoors or under a structure

If you lose or cannot acquire a GPS lock and home position, the aircraft will not have Stick Relativity, SAFE Circle, Position Hold or Return Home functions available.

It is not possible to use **Smart Mode** without having GPS enabled. If the 350 QX is initialized without GPS enabled, it will default to **Stability Mode**. The aircraft will still be capable of altitude hold.

If you do not have a GPS signal, try maneuvering the 350 QX by steering with forward elevator and rudder only.

## Audible Alerts and LED Codes On the 350 QX

The motors will Beep under the following conditions:

- At any time the props stop spinning after they have been initialized.
- After 60 seconds of no throttle input. (Waiting armed on the ground).

Please see the online manual at [www.bladehelis.com/Support/Manuals](http://www.bladehelis.com/Support/Manuals) for a full description of all audible tones and LED codes.



**CAUTION:** If you see the LED signal for low battery, land your aircraft and recharge the battery.



**CAUTION:** Do not attempt to use Return Home with a low battery.

# Audible Alerts and LED Codes On the 350 QX

Flight Mode	LED Code	Function
All	Rapid flashing blue	Bind Mode
	Rapid flashing red, green, blue at 3 second intervals	Low battery
	Rapid flashing red	Return Home active
Smart Mode	Solid green	Bound successfully in <b>Smart Mode</b>
	Slow, continuous flashing green	Bound with GPS off in <b>Smart Mode</b>
	Green—Flash, flash, flash, pause, flash, flash, flash, pause	Lost GPS signal while in Smart Mode; Default to <b>Stability Mode</b> with pressure controlled height
Stability Mode	Solid blue	Bound successfully in <b>Stability Mode</b>
	Slow, continuous flashing blue	Bound with GPS off in <b>Stability Mode</b>
	Blue—Flash, flash, flash, pause, flash, flash, flash, pause	Lost GPS signal while in <b>Stability Mode</b>
Agility Mode	Solid red	Bound successfully in <b>Agility Mode</b>
	Slow, continuous flashing red	Bound with GPS off in <b>Agility Mode</b>
	Red—Flash, flash, flash, pause, flash, flash, flash, pause	Lost GPS signal while in <b>Agility Mode</b>

## Troubleshooting

Problem	Possible Cause	Solution
350 QX will not initialize	The quadcopter was moved during initialization	Re-arm the aircraft being cautious to avoid any movement during initialization
	Trim is not in the correct position	The trim may need to be adjusted a click above or below center
GPS will not lock	Heavy overcast	Wait for lighter cloud cover and re-lock or disable GPS
	Solar flares	Wait for disturbance to subside or disable GPS
	Aircraft is indoors	Disable GPS
	Objects blocking clear access to the sky (under a metal cover, inside a car, tall buildings, etc...)	Move aircraft to a clear area
	Video transmitter nearby	Re-position or remove video transmitter
GPS has reduced resolution	Raised threat level by the U.S. government	Wait for threat level to be reduced or disable GPS
	The GPS antenna coaxial cable is nicked, cut, or otherwise damaged	Replace the GPS antenna
GPS functions not operating properly	The compass has been exposed to a magnet	Move the aircraft away from the magnetic source. In worst case scenario, the compass may need to be replaced
	The GPS antenna coaxial cable is nicked, cut, or otherwise damaged	Replace the GPS antenna
	The aircraft is behaving erratically	Rebind the aircraft with the GPS function off
	Aggressive flight	Fly level for a few seconds before flipping into other modes



## Limited Warranty

### What this Warranty Covers

Horizon Hobby, Inc., (Horizon) warrants to the original purchaser that the product purchased (the "Product") will be free from defects in materials and workmanship at the date of purchase.

### What is Not Covered

This warranty is not transferable and does not cover (i) cosmetic damage, (ii) damage due to acts of God, accident, misuse, abuse, negligence, commercial use, or due to improper use, installation, operation or maintenance, (iii) modification of or to any part of the Product, (iv) attempted service by anyone other than a Horizon Hobby authorized service center, (v) Product not purchased from an authorized Horizon dealer, or (vi) Product not compliant with applicable technical regulations.

OTHER THAN THE EXPRESS WARRANTY ABOVE, HORIZON MAKES NO OTHER WARRANTY OR REPRESENTATION, AND HEREBY DISCLAIMS ANY AND ALL IMPLIED WARRANTIES, INCLUDING, WITHOUT LIMITATION, THE IMPLIED WARRANTIES OF NON-INFRINGEMENT, MERCHANTABILITY AND FITNESS FOR A PARTICULAR PURPOSE. THE PURCHASER ACKNOWLEDGES THAT THEY ALONE HAVE DETERMINED THAT THE PRODUCT WILL SUITABLY MEET THE REQUIREMENTS OF THE PURCHASER'S INTENDED USE.

### Purchaser's Remedy

Horizon's sole obligation and purchaser's sole and exclusive remedy shall be that Horizon will, at its option, either (i) service, or (ii) replace, any Product determined by Horizon to be defective. Horizon reserves the right to inspect any and all Product(s) involved in a warranty claim. Service or replacement decisions are at the sole discretion of Horizon. Proof of purchase is required for all warranty claims. SERVICE OR REPLACEMENT AS PROVIDED UNDER THIS WARRANTY IS THE PURCHASER'S SOLE AND EXCLUSIVE REMEDY.

### Limitation of Liability

HORIZON SHALL NOT BE LIABLE FOR SPECIAL, INDIRECT, INCIDENTAL OR CONSEQUENTIAL DAMAGES, LOSS OF PROFITS OR PRODUCTION OR COMMERCIAL LOSS IN ANY WAY, REGARDLESS OF WHETHER SUCH CLAIM IS BASED IN CONTRACT, WARRANTY, TORT, NEGLIGENCE, STRICT LIABILITY OR ANY OTHER THEORY OF LIABILITY, EVEN IF HORIZON HAS BEEN ADVISED OF THE POSSIBILITY OF SUCH DAMAGES. Further, in no event shall the liability of Horizon exceed the individual price of the Product on which liability is asserted. As Horizon has no control over use, setup, final assembly, modification or misuse, no liability shall be assumed nor accepted for any resulting damage or injury. By the act of use, setup or assembly, the user accepts all resulting liability. If you as the purchaser or user are not prepared to accept the liability associated with the use of the Product, purchaser is advised to return the Product immediately in new and unused condition to the place of purchase.

### Law

These terms are governed by Illinois law (without regard to conflict of law principals). This warranty gives you specific legal rights, and you may also have other rights which vary from state to state. Horizon reserves the right to change or modify this warranty at any time without notice.

### WARRANTY SERVICES

#### Questions, Assistance, and Services

Your local hobby store and/or place of purchase cannot provide warranty support or service. Once assembly, setup or use of the Product has been started, you must contact your local distributor or Horizon directly. This will enable Horizon to better answer your questions and service you in the event that

you may need any assistance. For questions or assistance, please visit our website at [www.horizonhobby.com](http://www.horizonhobby.com), submit a Product Support Inquiry, or call the toll free telephone number referenced in the Warranty and Service Contact Information section to speak with a Product Support representative.

### Inspection or Services

If this Product needs to be inspected or serviced and is compliant in the country you live and use the Product in, please use the Horizon Online Service Request submission process found on our website or call Horizon to obtain a Return Merchandise Authorization (RMA) number. Pack the Product securely using a shipping carton. Please note that original boxes may be included, but are not designed to withstand the rigors of shipping without additional protection. Ship via a carrier that provides tracking and insurance for lost or damaged parcels, as Horizon is not responsible for merchandise until it arrives and is accepted at our facility. An Online Service Request is available at [http://www.horizonhobby.com/content/\\_service-center\\_render-service-center](http://www.horizonhobby.com/content/_service-center_render-service-center). If you do not have internet access, please contact Horizon Product Support to obtain a RMA number along with instructions for submitting your product for service. When calling Horizon, you will be asked to provide your complete name, street address, email address and phone number where you can be reached during business hours. When sending product into Horizon, please include your RMA number, a list of the included items, and a brief summary of the problem. A copy of your original sales receipt must be included for warranty consideration. Be sure your name, address, and RMA number are clearly written on the outside of the shipping carton.

**NOTICE:** Do not ship LiPo batteries to Horizon. If you have any issue with a LiPo battery, please contact the appropriate Horizon Product Support office.

### Warranty Requirements

**For Warranty consideration, you must include your original sales receipt verifying the proof-of-purchase date.** Provided warranty conditions have been met, your Product will be serviced or replaced free of charge. Service or replacement decisions are at the sole discretion of Horizon.

### Non-Warranty Service

**Should your service not be covered by warranty, service will be completed and payment will be required without notification or estimate of the expense unless the expense exceeds 50% of the retail purchase cost.** By submitting the item for service you are agreeing to payment of the service without notification. Service estimates are available upon request. You must include this request with your item submitted for service. Non-warranty service estimates will be billed a minimum of ½ hour of labor. In addition you will be billed for return freight. Horizon accepts money orders and cashier's checks, as well as Visa, MasterCard, American Express, and Discover cards. By submitting any item to Horizon for service, you are agreeing to Horizon's Terms and Conditions found on our website [http://www.horizonhobby.com/content/\\_service-center\\_render-service-center](http://www.horizonhobby.com/content/_service-center_render-service-center).

**ATTENTION: Horizon service is limited to Product compliant in the country of use and ownership. If received, a non-compliant Product will not be serviced. Further, the sender will be responsible for arranging return shipment of the un-serviced Product, through a carrier of the sender's choice and at the sender's expense. Horizon will hold non-compliant Product for a period of 60 days from notification, after which it will be discarded.**

# Warranty and Service Contact Information

Country of Purchase	Horizon Hobby	Contact Information	Address
United States of America	Horizon Service Center (Repairs and Repair Requests)	servicecenter.horizonhobby.com/RequestForm/	4105 Fieldstone Rd Champaign, Illinois, 61822 USA
	Horizon Product Support (Product Technical Assistance)	www.quickbase.com/db/bghj7ey8c?a=GenNewRecord 888-959-2304	
	Sales	sales@horizonhobby.com 888-959-2304	
United Kingdom	Service/Parts/Sales: Horizon Hobby Limited	sales@horizonhobby.co.uk +44 (0) 1279 641 097	Units 1–4 , Ployters Rd, Staple Tye Harlow, Essex, CM18 7NS, United Kingdom
Germany	Horizon Technischer Service	service@horizonhobby.de	Christian-Junge-Straße 1 25337 Elmshorn, Germany
	Sales: Horizon Hobby GmbH	+49 (0) 4121 2655 100	
France	Service/Parts/Sales: Horizon Hobby SAS	infofrance@horizonhobby.com +33 (0) 1 60 18 34 90	11 Rue Georges Charpak 77127 Lieusaint, France
China	Service/Parts/Sales: Horizon Hobby – China	info@horizonhobby.com.cn +86 (021) 5180 9868	Room 506, No. 97 Changshou Rd. Shanghai, China 200060

## FCC Information

This device complies with part 15 of the FCC rules. Operation is subject to the following two conditions: (1) This device may not cause harmful interference, and (2) this device must accept any interference received, including interference that may cause undesired operation.



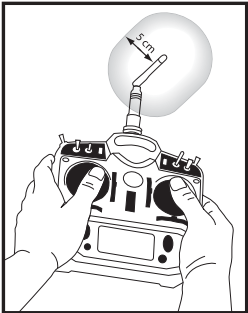
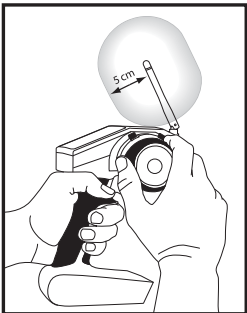
**CAUTION:** Changes or modifications not expressly approved by the party responsible for compliance could void the user's authority to operate the equipment.

This product contains a radio transmitter with wireless technology which has been tested and found to be compliant with the applicable regulations governing a radio transmitter in the 2.400GHz to 2.4835GHz frequency range.

### Antenna Separation Distance

When operating your Spektrum transmitter, please be sure to maintain a separation distance of at least 5 cm between your body (excluding fingers, hands, wrists, ankles and feet) and the antenna to meet RF exposure safety requirements as determined by FCC regulations.

The following illustrations show the approximate 5 cm RF exposure area and typical hand placement when operating your Spektrum transmitter.



## IC Information

This device complies with Industry Canada license-exempt RSS standard(s). Operation is subject to the following two conditions:

(1) this device may not cause interference, and (2) this device must accept any interference, including interference that may cause undesired operation of the device.

# Compliance Information for the European Union

AT	BE	BG	CZ	CY	DE	DK
EE	ES	FI	FR	GR	HR	HU
IE	IT	LT	LU	LV	MT	NL
PL	PT	RO	SE	SI	SK	UK
IS	LI	NO	CH			

## Declaration of Conformity

(in accordance with ISO/IEC 17050-1)

No. HH2013080502

Product(s): BLH 350QX RTF

Item Number(s): BLH7800, BLH7800M1

Equipment class: 2

The object of declaration described above is in conformity with the requirements of the specifications listed below, following the provisions of the European R&TTE directive 1999/5/EC, EMC Directive 2004/108/EC and LVD Directive 2006/95/EC:

EN 300-328 V1.7.1: 2006

EN 301 489-1 V1.9.2: 2012

EN 301 489-17 V2.1.1: 2009

EN60950-1:2006+A11:2009+A1:2010+A12: 2011

EN61000-3-2:2006+A1:2009+A2:2009

EN61000-3-3:2008

EN55022:2010 + AC:2011

EN55024:2010



Signed for and on behalf of:  
Horizon Hobby, Inc.  
Champaign, IL USA  
Aug 05, 2013

Robert Peak  
Chief Financial Officer  
Horizon Hobby, Inc.

## Declaration of Conformity

(in accordance with ISO/IEC 17050-1)

No. HH2013080503

Product(s): BLH 350QX BNF

Item Number(s): BLH7880

Equipment class: 1

The object of declaration described above is in conformity with the requirements of the specifications listed below, following the provisions of the European R&TTE directive 1999/5/EC, EMC Directive 2004/108/EC and LVD Directive 2006/95/EC:

EN 301 489-1 V1.9.2: 2012

EN 301 489-17 V2.1.1: 2009

EN61000-3-2:2006+A1:2009+A2:2009

EN61000-3-3:2008

EN60950-1:2006+A11:2009+A1:2010+A12: 2011

EN55022:2010 + AC:2011

EN55024:2010



Signed for and on behalf of:  
Horizon Hobby, Inc.  
Champaign, IL USA  
Aug 05, 2013

Robert Peak  
Chief Financial Officer  
Horizon Hobby, Inc.

## Instructions for disposal of WEEE by users in the European Union



This product must not be disposed of with other waste. Instead, it is the user's responsibility to dispose of their waste equipment by handing it over to a designated collections point for the recycling of waste electrical and electronic equipment. The separate collection and recycling of your waste equipment at the time of disposal will help to conserve natural resources and ensure that it is recycled in a manner that protects human health and the environment. For more information about where you can drop off your waste equipment for recycling, please contact your local city office, your household waste disposal service or where you purchased the product.

©2013 Horizon Hobby, Inc.

Blade, E-flite, Celectra, DSM, DSM2, DSMX, AirWare, ModelMatch

and the Horizon Hobby logo are trademarks or registered trademarks of Horizon Hobby, Inc.

The Spektrum trademark is used with permission of Bachmann Industries, Inc.

US 7,391,320. Other patents pending.

Created 6/13 40889